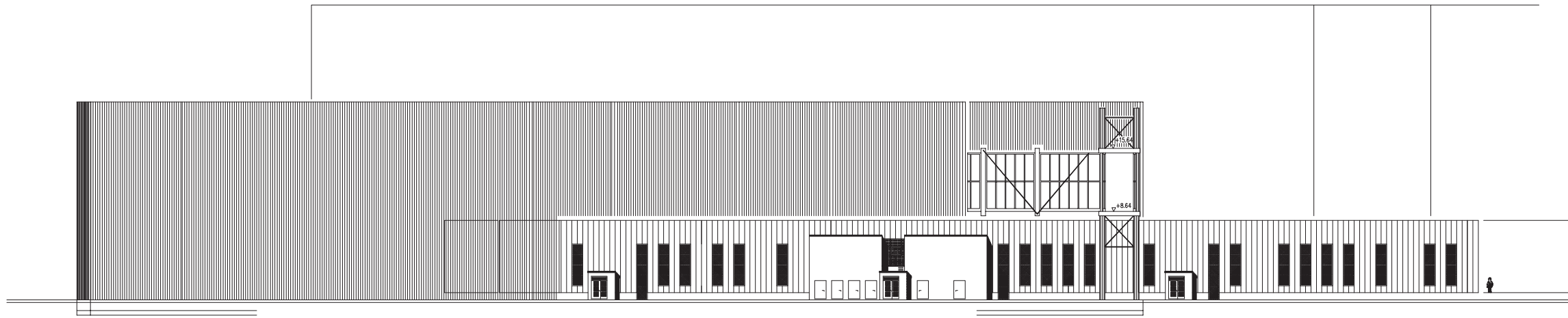
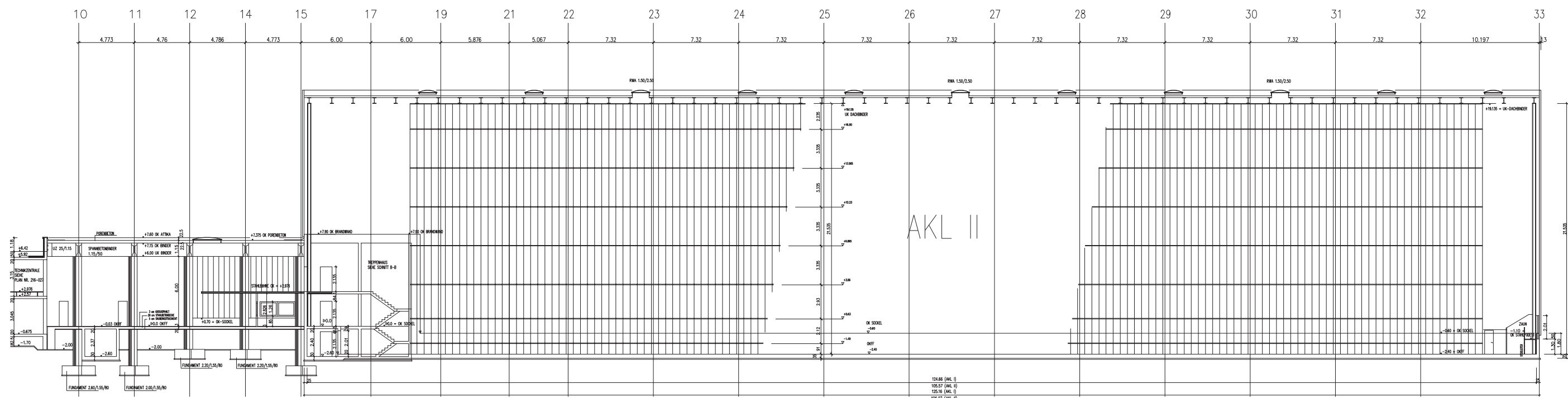


ANSICHT VON NORDEN

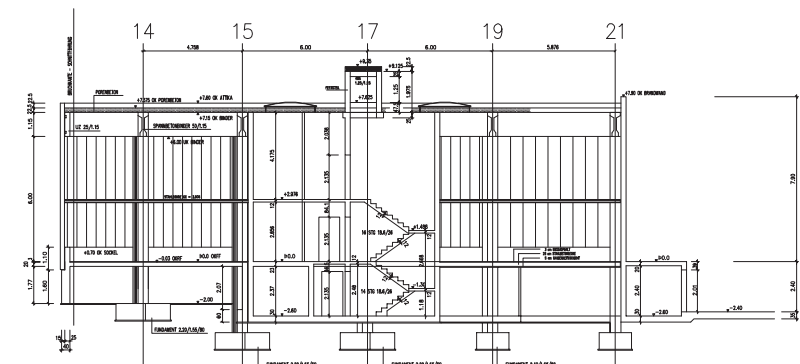


ANSICHT VON NORD - WESTEN

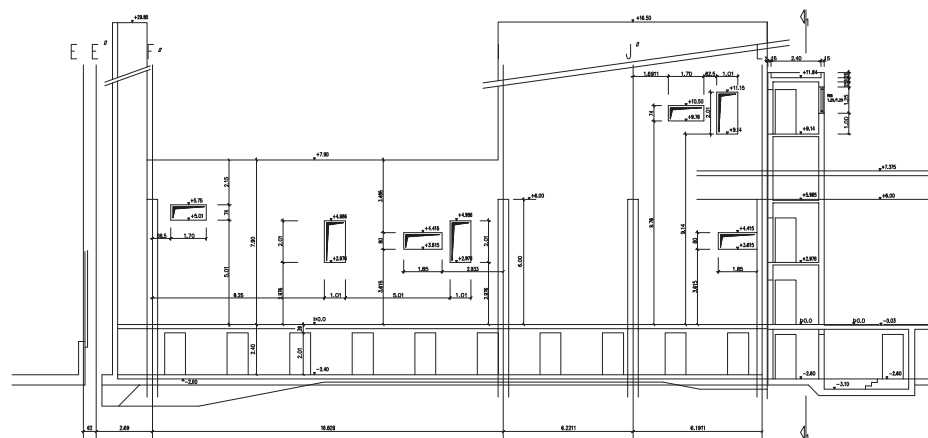
| | | | |
|---|--|---|------------|
| Gebäude 120 und 121/AKL I und AKL II | | Maßstab | 1:200 |
| | | Datum | 30.04.1991 |
| Ansichten | | Gezeichnet | E. Rindorf |
| | | Geprüft | |
| | | Datum | |
| | | Gezeichnet | |
| <small>Änderung</small> <small>1/92/120-121/AKL I und AKL II</small> | | <small>Alle Maße sind am Bau zu prüfen!</small> | |



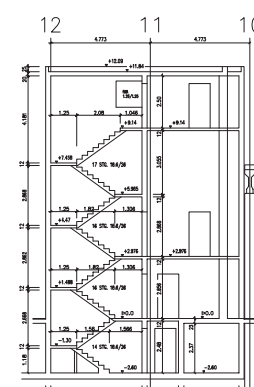
SCHNITT A - A



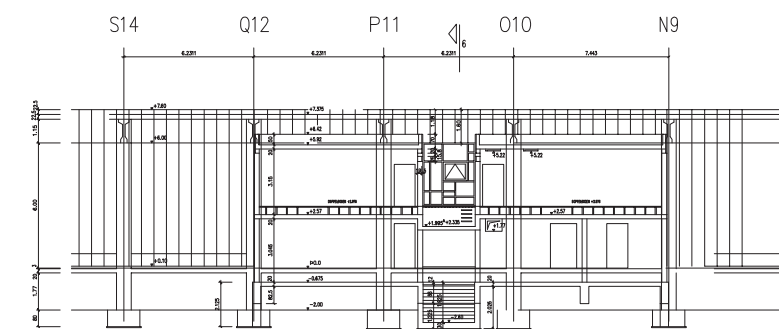
SCHNITT B - B



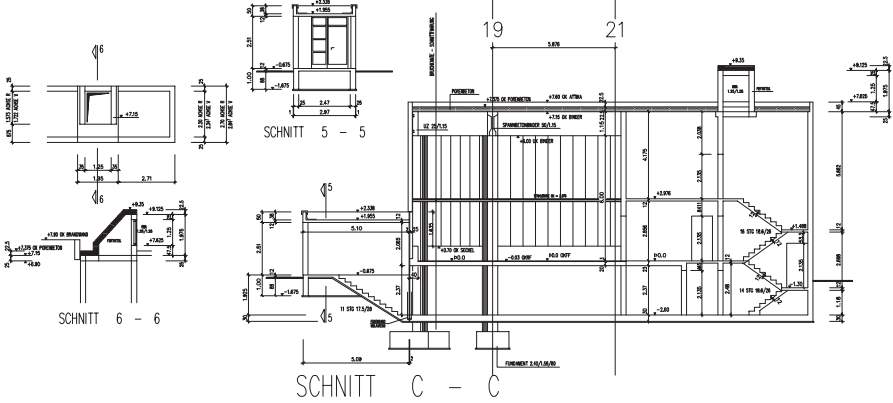
SCHNITT E - E



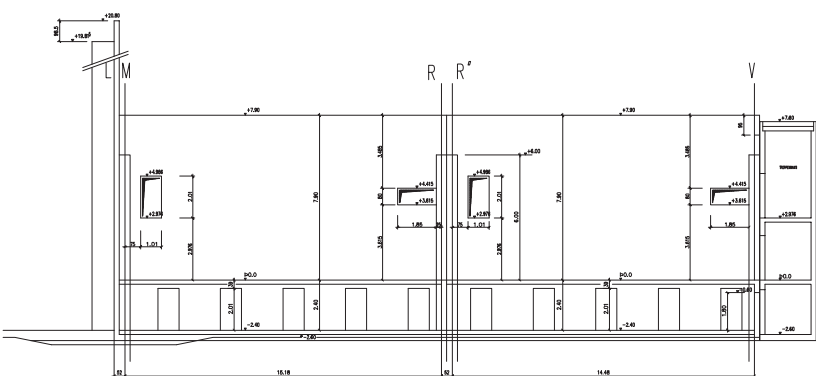
SCHNITT 1 - 1



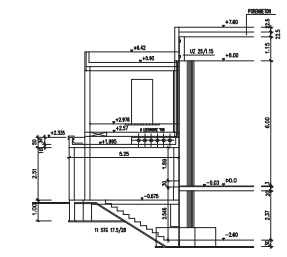
SCHNITT D - D



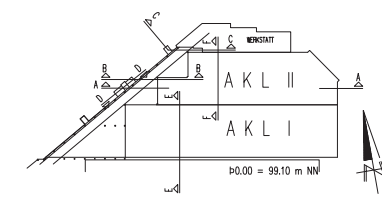
SCHNITT C - C



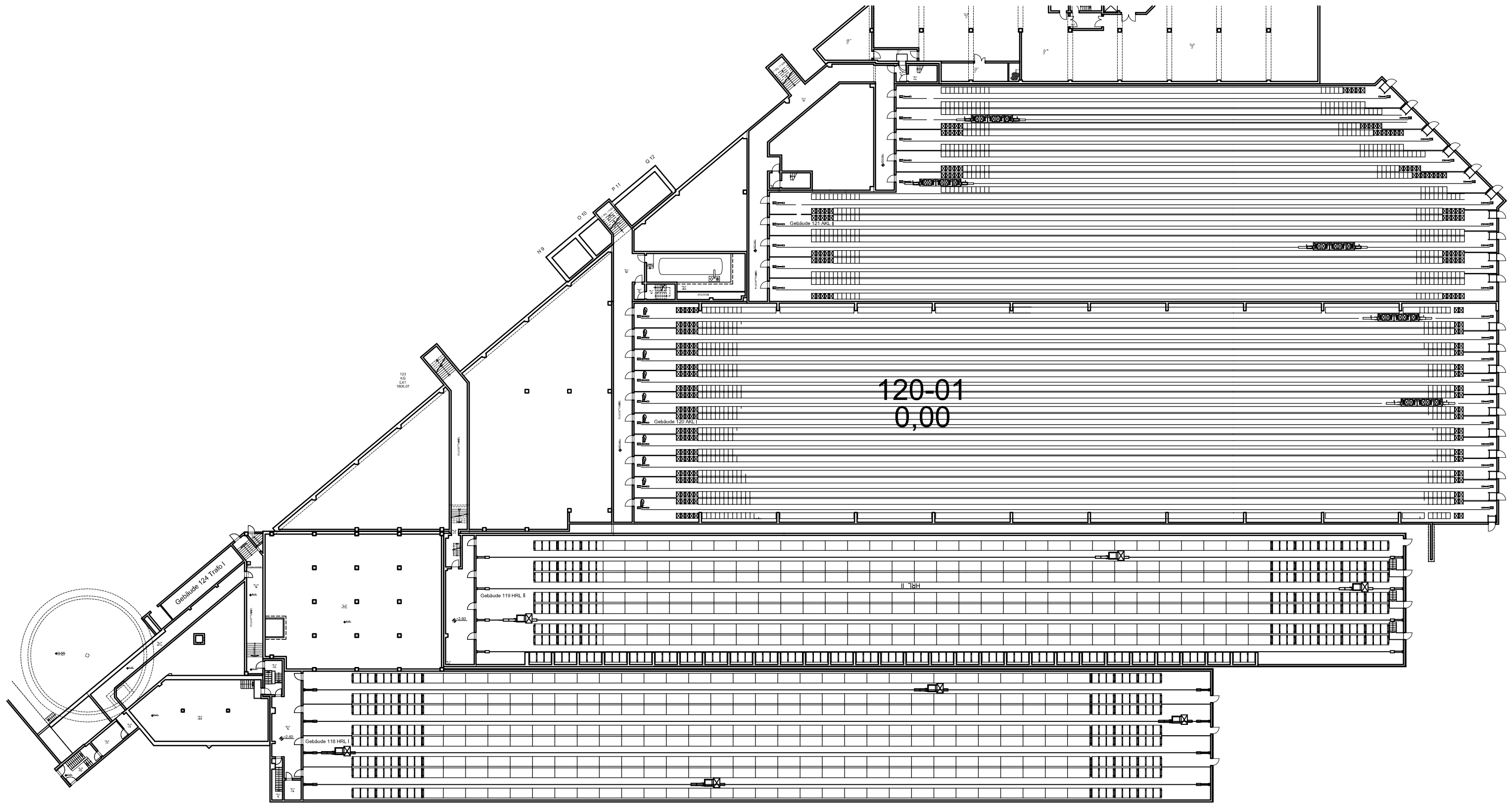
SCHNITT F - F



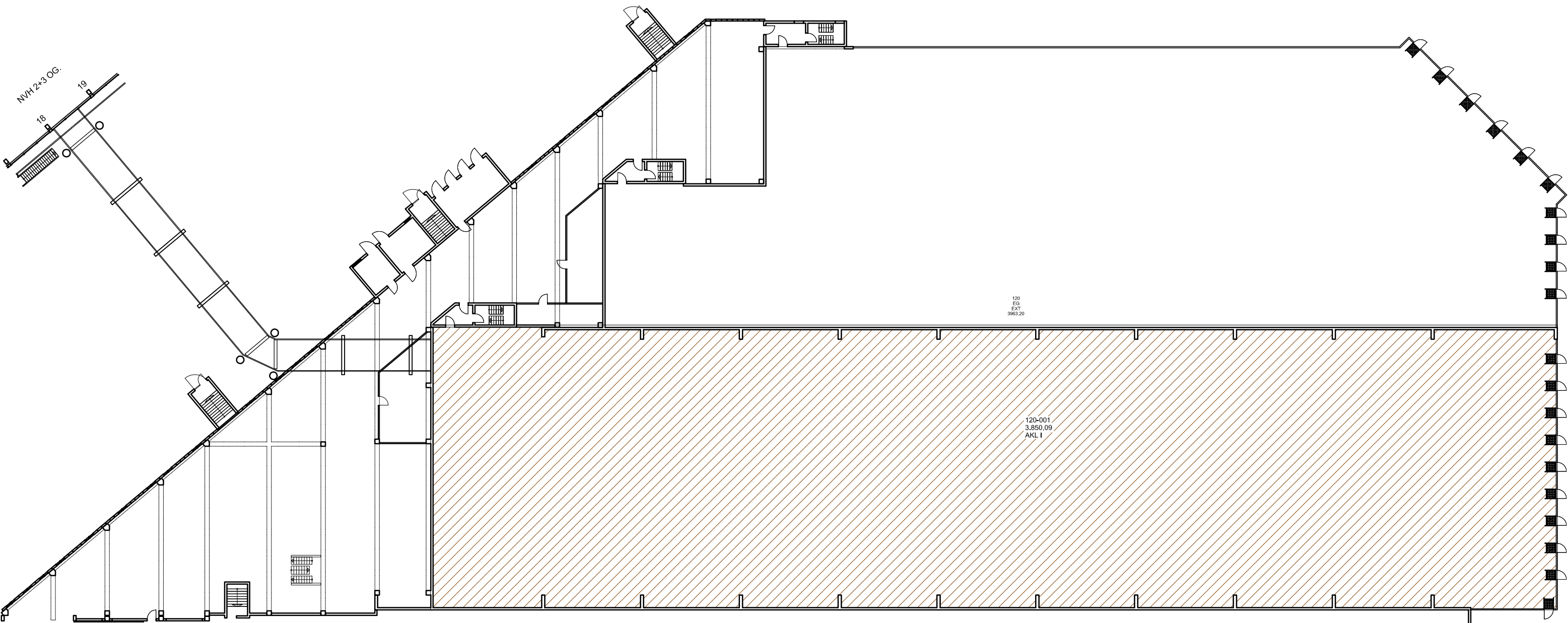
SCHNITT 6 - 6



| | | | |
|----------------------------------|--|------------|-------------|
| Gebäude 120-121/ANL I-ANL II | | Maßstab | 1:50 |
| Schnitte | | Datum | 20.04.1991 |
| | | Gezeichnet | E.H. Müller |
| | | Geprüft | |
| | | Datum | |
| | | Gezeichnet | |
| Alle Maße sind am Bau zu prüfen! | | | |



building-120-Kellergeschoss-bodrum kat planı

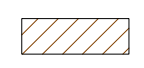


NVH 2+3 OG.

120
EG
EXIT
3963,20

120-001
3.850,09
AKL I

Bereich



LAGER / VERSAND

| | | | | | | | |
|--|--|------------|--|--|-----------|--------|-------------------|
| | | | | Gebäude 120 EG Stand 01.06.2012 Belegung nach Bereich | | | |
| Bearbeitet: | | Planstand: | | Plannummer: | | | |
| Datum: | | Errichter: | | Gebäude | Stockwerk | Gewerk | |
| Geprüft: | | Maßstab: | | Planart | Nummer | Index | Achsenbezeichnung |
| Datum: | | | | GRU 01 00 | | | |
| C:\SINPAŞ PROJELER\00-ALMANYA\binalar\120\dwg\120_EG.DWG | | | | | | | |